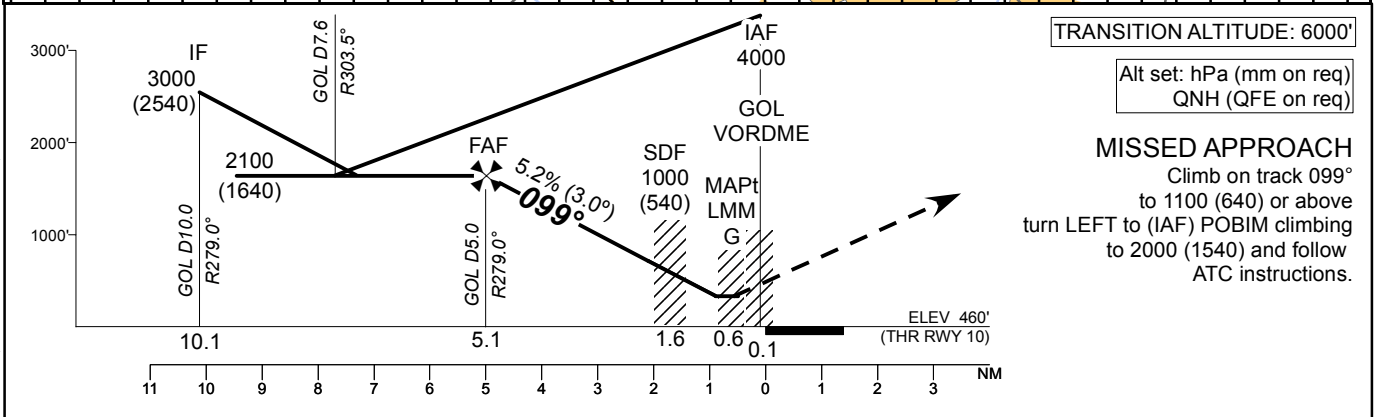
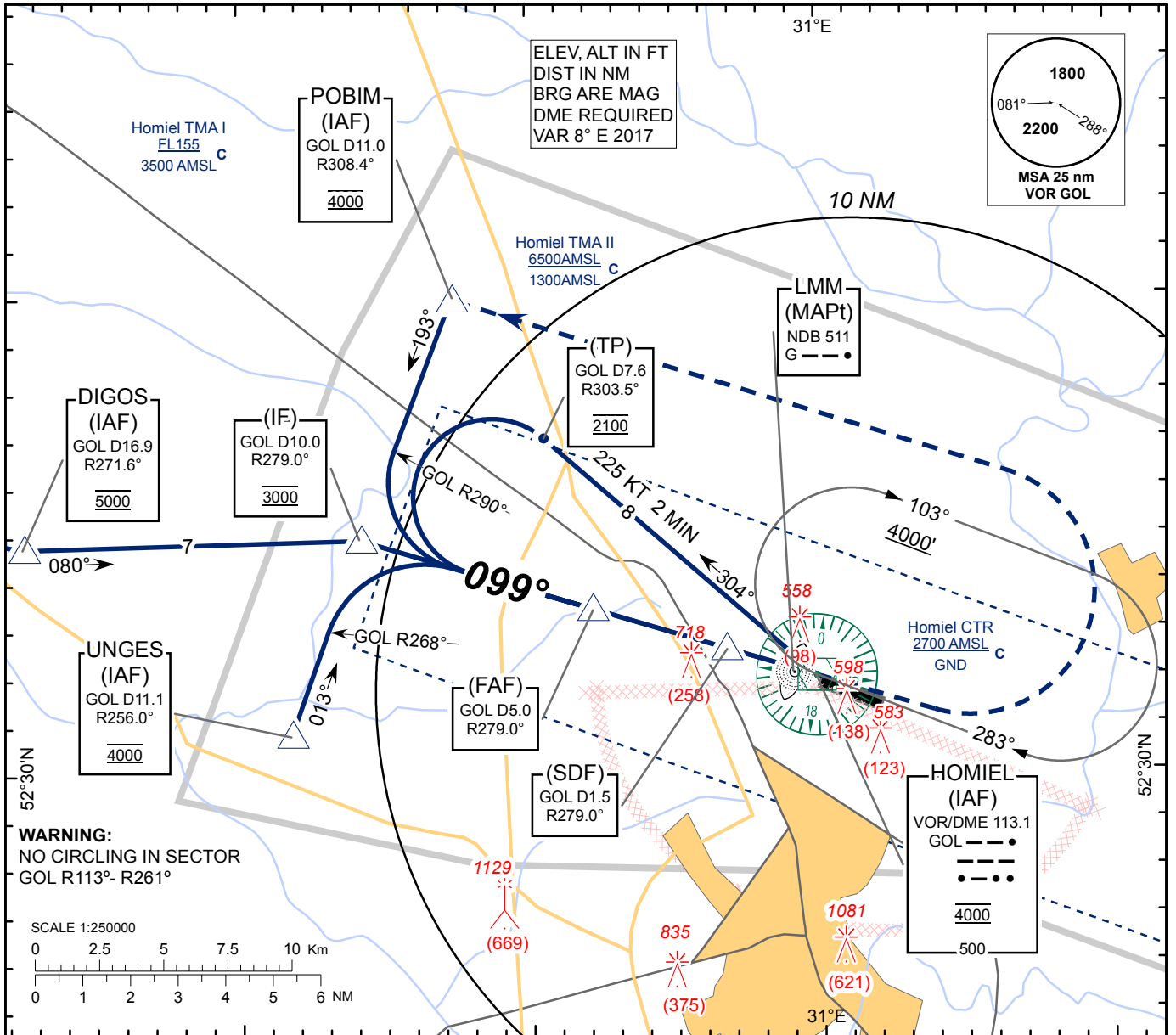


**INSTRUMENT  
APPROACH  
CHART - ICAO**

AERODROME ELEV 471  
HEIGHTS RELATED TO  
THR RWY 10 - ELEV THR 460

APP 126.100  
TWR 118.100  
MET 119.550 (EN)  
124.475 (RUS)

**HOMIEL  
VOR  
RWY 10**



TRANSITION ALTITUDE: 6000'  
Alt set: hPa (mm on req)  
QNH (QFE on req)

**MISSED APPROACH**  
Climb on track 099°  
to 1100 (640) or above  
turn LEFT to (IAF) POBIM climbing  
to 2000 (1540) and follow  
ATC instructions.

Aircraft Category		A	B	C	D	GOL	5	4	3	2	1
Straight-in Approach OCA(H)	VOR/DME	790 (330)				DIST THR	5.1	4.1	3.1	2.1	1.1
	VOR					ALTITUDE	2100	1810	1490	1180	860
Circle - to - land		860 (390)	860 (390)	1120 (650)	1120 (650)	HEIGHT	(1640)	(1350)	(1030)	(720)	(400)
Timing not authorized for defining the MAPt											
	GS	Kts	120	140	160	180	200	220			
	Desc.Rate(5.2%)	ft/min	630	740	840	950	1050	1160			
	MAPt(4.9 NM)	min:sec	02:27	02:06	01:50	01:38	01:28	01:20			

CHANGES: Mandatory altitude; COORDs UMP178; DLTLD UMD239.

HOMIEL  
VOR  
RWY 10

**AERONAUTICAL DATA TABULATION**

<b>VOR approach to RWY10 from GOL VOR/DME, POBIM, DIGOS, UNGES</b>	
<b>Fix/point</b>	<b>Coordinates</b>
POBIM (IAF) R308.4° D11.0 GOL	523958N 0304721E
DIGOS (IAF) R271.6° D16.9 GOL	523446N 0303231E
UNGES (IAF) R256.0° D11.1 GOL	523050N 0304144E
(TP) R303.5° D7.6 GOL	523703N 0305029E
(IF) R279° D10.0 GOL	523455N 0304409E
(FAP) R279° D5.0 GOL	523327N 0305207E
(SDF) R279° D1.5 GOL	523228N 0305731E
GOL VOR/DME (IAF)	523200.6N 0305949.9E
G LMM (MAPt)	523204.3N 0305903.6E
THR RWY 10	523152.08N 0305956.42E